

SAFE HAVEN

Growing up in a war-stricken country, Najwa Mroue never envisaged she would find her dream family home

FEATURE BEVERLEY BYRNE | PHOTOGRAPHY COLIN POOLE





DINING AREA
A statement painting by Stephen Farley creates a striking contrast with the blue bench seat – the look is tied together with lights designed by Najwa. Table, £1,300, Kent and London. Rochelle chairs, £249 each, Made. Bench, £1,400, Ben Whistler. Handblown blue pendant lights, £870, Rothschild & Bickers



UNIQUE

HOME TRUTHS
THE PROPERTY
Early 19th-century cottage
LOCATION West London
ROOMS Hall, sitting room/dining room, kitchen, cloakroom, three bedrooms (one en suite), bathroom
PURCHASED 2014
PREVIOUS PROPERTY
‘Before we bought this place, we lived in a flat nearby,’ says Najwa.



FAVOURITE SHOP
‘I love Ollie Bow & Son. The owner travels the world to find interesting pieces – it never fails to lift my spirits.’

MASTER BEDROOM
This area benefits from a veranda overlooking the walled garden. Juniper bed, £1,375, And So To Bed. Flowerpot pendant lights, £165 each, Houseology

designing the dining room pendants using copper piping. I also commissioned an artist to write “the electricity is back on” in Arabic on the stairwell walls in gold. It’s a daily reminder of how lucky we are.’

From the bronze splashback in the kitchen to the mirrored Art Deco coffee table, gold is a recurring colour in Najwa’s home. ‘I love it because it lends warmth and reflects light,’ she says. ‘It really makes a statement.’ The same can be said of the antique mirror in the dining area. ‘Rooms benefit from a striking piece, and when I found this mirror, I knew it would enhance the illusion of space and grandeur.’

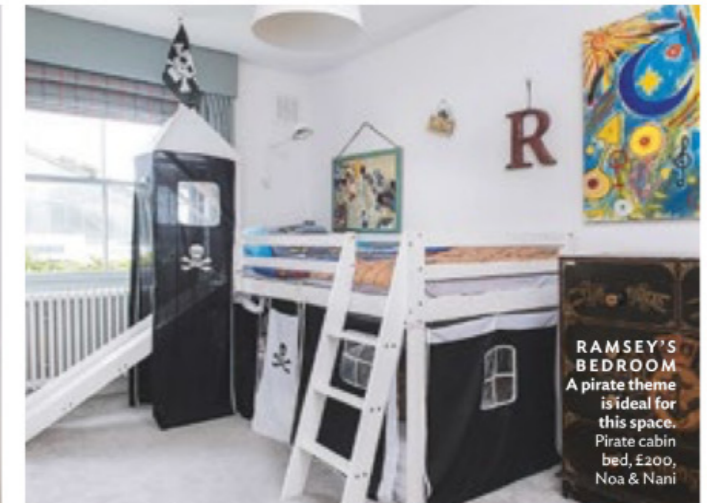
This is a home that fuses vintage chic with contemporary touches, producing an interior that is entertaining, imaginative, creative and

comforting. ‘We haven’t stuck to one particular theme or era for the decor, because I find the quirkiest it is, the better,’ explains Najwa. ‘I love antiques that represent a design statement born out of necessity, such as my husband’s 1960s radiogram. I enjoy finding an alternative way to give them another chance to shine.’ For instance, the artwork above the bed in the bedroom is a Mexican door that’s 150 years old. Before this, it was used as a coffee table by Najwa’s mother-in-law.

Now the couple’s home also accommodates their son Ramsey, 5, and the focus is firmly on family life. ‘This house gives us the chance to bring up our son in a peaceful environment,’ says Najwa. ‘Every day, it keeps me grounded and reminds me that chaos can be overcome.’



EN SUITE
‘I love the tree motif wallpaper – it’s the perfect contrast against the tiles,’ says Najwa. Woods wallpaper, £72 per roll, Cole & Son. Metro tiles, £19.50sq m, Topps Tiles



RAMSEY'S BEDROOM
A pirate theme is ideal for this space. Pirate cabin bed, £200, Noa & Nani